

environmental
planning
+
SEQRA

planning and permitting services...

H2M's environmental planners are experts in SEQRA procedure compliance and documentation preparation. We work with our engineers and architects to integrate environmental considerations into project planning to provide solutions that advance our client's project goals while remaining protective of the environment.



transit oriented development



land planning + design



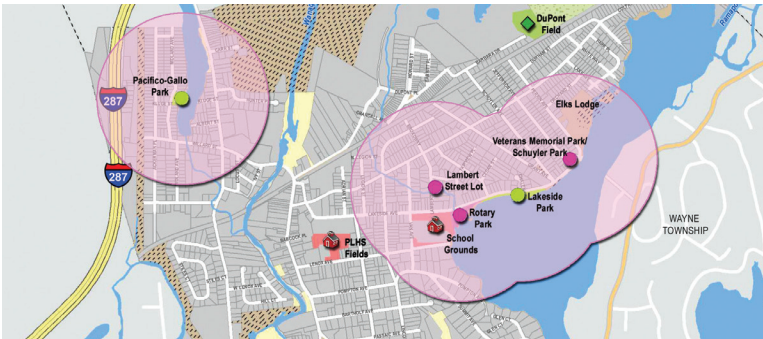
air quality



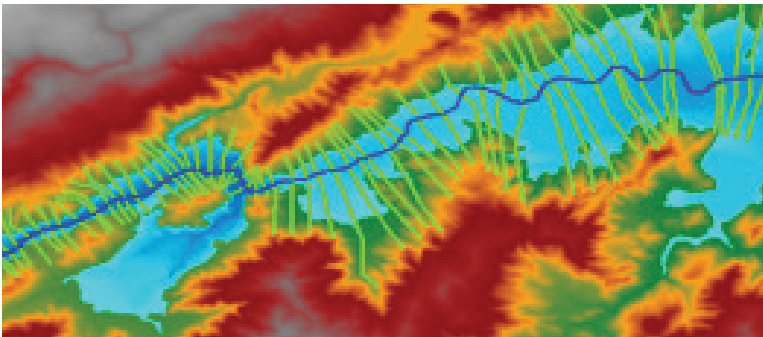
brownfield properties



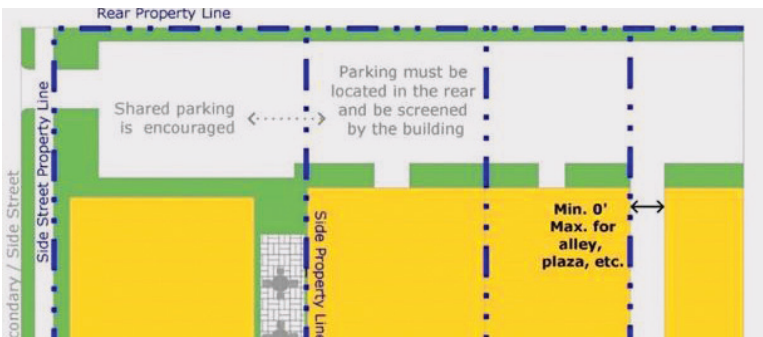
FEMA map review



GIS mapping + analysis



hydraulic modeling



zoning ordinances



pervious paving with bioretention islands

services include

SEQRA, City Environmental Quality Review (CEQR) and National Environmental Policy Act (NEPA) Compliance

Environmental Assessment Forms and Environmental Impact Statements

Municipal SEQRA/CEQR/NEPA Review and Support

Coastal Zone Consistency/ Local Waterfront Revitalization Program (LWRP) Assessments

Natural Resources Assesments

GIS Mapping and Analysis

Land Use Planning and Zoning

Urban Design and Visual Simulations

Community Engagement

Feasibility Studies and Concept Plans

Environmental Permitting

Municipal Board Representation

Professional Private Testimony



Transportation Planning and Traffic Analysis

H2M is a multi-disciplined professional consulting and design firm, proud of our long history of client service and our consistent ability to meet tough architectural, engineering and environmental challenges head-on. Since 1933, H2M has helped design and build many of our local communities: from water treatment facilities to firehouses, from schools to road reconstruction, from environmental site assessment to groundwater remediation. Since our early roots, our focus has remained steadfast: to provide quality service with sound judgment and to serve our clients as an honest and professional resource.

We offer a practical approach with creative results.



Corporate Headquarters

Melville, NY  631.756.8000  h2m.com



[Check Out Our Locations](#)