



sustainability



# conserving for the future through our design solutions

H2M is dedicated to building sustainable communities. We work towards this goal by building multi-disciplined teams around project specific goals to identify opportunities. We develop designs that address client needs while considering environmental and social impacts. Our project approach is continually evolving to respond to current knowledge and includes tools that allows for more data driven, objective, decision making throughout a projects life cycle.

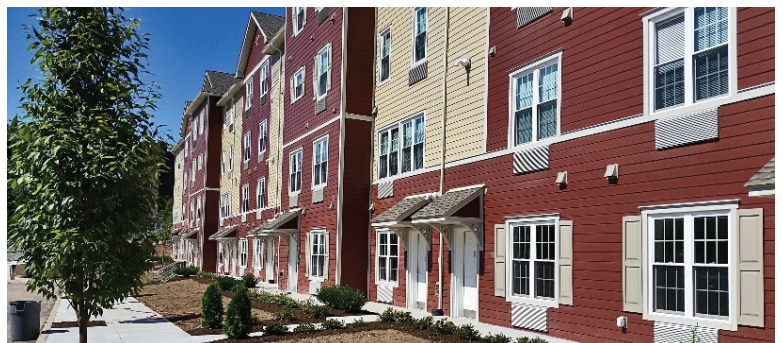


renewables

---

## Staff Qualifications

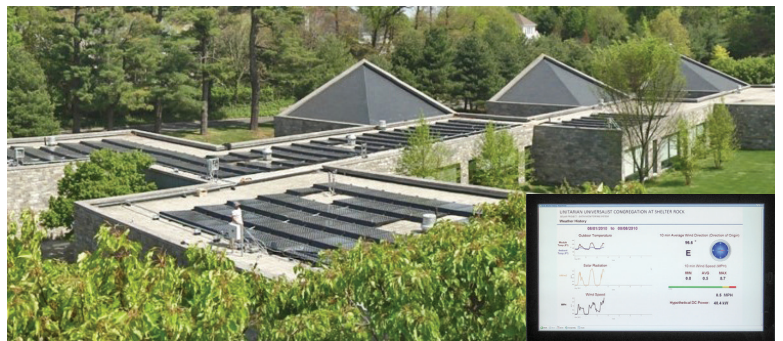
- 36 LEED Accredited Professionals, 26 LEED AP BD&C, and 2 LEED AP + Homes.
  - 14 LEED Green Associates
  - 2 Envision Sustainability Professionals
  - U.S. Green Building Council National Member
- 



LEED certification



stormwater management



energy monitoring interface





daylighting



geothermal heating + cooling



sunshades



environmental remediation



existing building reuse

## services include

- Integrated Design
- Architecture
- MEP
- Structural
- Interior Design
- Landscape Architecture
- Site/Civil
- Waste Treatment
- Renewables
- Business Analysis
- Energy Modeling/Energy Analysis
- Sustainability Planning
- Return on Investment (ROI) Analysis
- Energy Performance Contracts
- Lighting Design
- Day Lighting Control Systems
- Mechanical Systems Design
- Radiant Heating
- Geothermal
- High Efficiency Heating Plants
- Stormwater Management
- Rain Gardens
- Pervious Paving
- Bioretention Islands
- Vegetated Swales
- Master Planning
- Environmental Remediation
- Instrumentation and Control
- LEED Certification
- Indoor Air Quality
- Energy Efficient Envelopes
- Smart Growth and Sustainable Development

H2M is a multi-disciplined professional consulting and design firm, proud of our long history of client service and our consistent ability to meet tough architectural, engineering and environmental challenges head-on. Since 1933, H2M has helped design and build many of our local communities: from water treatment facilities to firehouses, from schools to road reconstruction, from environmental site assessment to groundwater remediation. Since our early roots, our focus has remained steadfast: to provide quality service with sound judgment and to serve our clients as an honest and professional resource.

**We offer a practical approach with creative results.**





pervious paving with bioretention islands



cool roofs



lighting upgrades



water reuse



occupant wellness